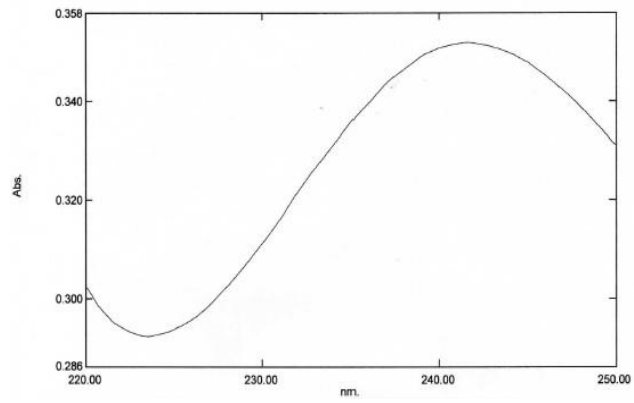


Lampiran 2 . Panjang Gelombang Atorvastatin Ca dalam larutan buffer fosfat pH 6,8

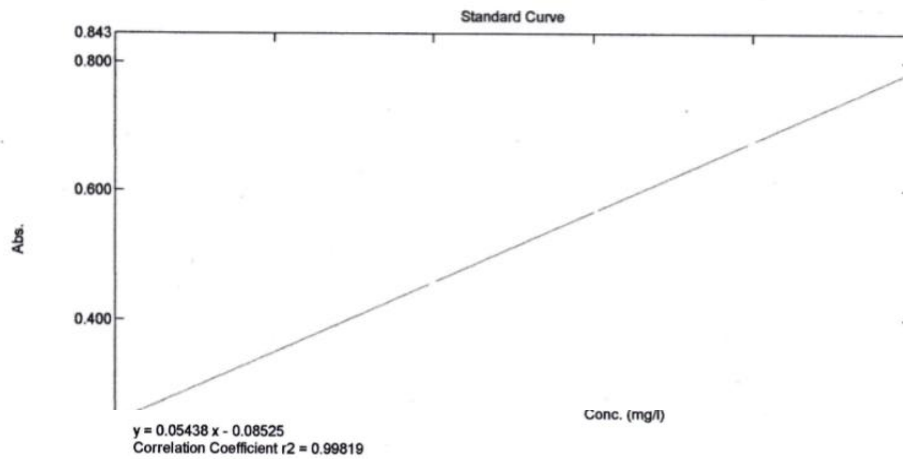


Lampiran 3. Kurva baku atorvastatin-Ca

Standard Table Report

02/27/2018 01:08:40 PM

File Name: C:\Users\HP\Documents\File_180227_114534.pho



Standard Table

	Sample ID	Type	Ex	Conc	WL240.6	Wgt.Factor	Comments
1	1	Standard		8.000	0.244	1.000	
2	2	Standard		8.000	0.339	1.000	
3	3	Standard		10.000	0.462	1.000	
4	4	Standard		12.000	0.575	1.000	
5	5	Standard		14.000	0.667	1.000	
6	6	Standard		16.000	0.780	1.000	
7	7	Standard		6.000	0.245	1.000	
8	8	Standard		8.000	0.337	1.000	
9	9	Standard		10.000	0.471	1.000	
10	10	Standard		12.000	0.574	1.000	
11	11	Standard		14.000	0.673	1.000	
12	12	Standard		16.000	0.780	1.000	
13	13	Standard		6.000	0.247	1.000	
14	14	Standard		8.000	0.339	1.000	
15	15	Standard		10.000	0.451	1.000	
16	16	Standard		12.000	0.580	1.000	
17	17	Standard		14.000	0.679	1.000	
18	18	Standard		16.000	0.789	1.000	

Didapatkan persamaan linier yaitu

$$Y = 0,05438x - 0,08525$$

$$R^2 = 0,99519$$

$$R = 0,99951$$

Lampiran 4. Hasil Uji sifat Alir serbuk

1. Hasil uji kecepatan alir serbuk

Formula	Replikasi						Rata-rata±SD
	1		2		3		
	Detik	g/detik	detik	g/detik	detik	g/detik	g/detik
LS 1	1,65	30,42	1,55	32,38	1,70	29,52	30,77±1,46
LS 2	1,82	19,35	1,63	21,60	1,69	20,83	20,59±1,15
LS 3	1,15	19,83	1,11	20,54	1,09	20,92	20,43±0,55
LS 4	1,05	16,69	1,15	15,23	1,05	16,69	16,20±0,84

2. Hasil uji sudut diam serbuk

Formula	replikasi									Rata-rata±SD
	1			2			3			
	h	R	Sudut diam (°)	h	R	Sudut diam (°)	h	r	Sudut diam (°)	
LS 1	2,5	7,5	18,43	2,2	7,6	16,14	2,5	6,8	20,11	21,63± 0,55
LS 2	2,2	7,3	16,77	2,1	7,2	16,26	2,6	7,0	20,37	19,83± 0,42
LS 3	2	6,2	17,87	2,6	7,0	20,37	2,0	6,9	16,16	17,38± 0,28
LS 4	2,1	6,8	17,16	1,7	6,9	13,46	1,8	6,5	15,47	14,96± 0,32

3. Hasil Uji indeks kompresibilitas serbuk

Formula	Volume awal (ml)	Volume mampat (ml)	Indeks Kompresibilitas (%)	Rata-rata \pmSD Indeks Kompresibilitas (%)
LS 1	100	90,2	9,80	9,83 \pm 0,45
	100	90,6	9,40	
	100	89,7	10,30	
LS 2	60	52,7	12,17	13,08 \pm 0,81
	60	52	13,33	
	59	50,9	13,73	
LS 3	35	29,8	14,86	14,19 \pm 1,67
	35	29,6	15,43	
	35	30,7	12,29	
LS 4	25	22,6	9,60	15,69 \pm 5,67
	24,6	20,5	16,67	
	24,5	19,4	20,82	

Lampiran 5. Hasil uji sifat fisik tablet

1. Keseragaman bobot tablet

LS 1

No tablet	Bobot (mg)		
	Replikasi		
	1	2	3
1	712,9	710,4	708,92
2	710,23	707,8	715,9
3	705,6	706,9	712,8
4	715,9	713,2	714,28
5	710,8	710,8	715,68
6	709,9	709,9	715,9
7	714,6	708,6	709,41
8	709,21	712,82	704,81
9	708,86	715,9	712,8
10	706,78	712,92	709,4
11	712,69	710,84	715,82
12	716,9	709,97	709,82
13	709,61	711,37	712,8
14	712,81	704,9	714,7
15	716,8	714,9	709,87
16	710,9	708,92	711,8
17	708,36	705,56	716,82
18	710,29	708,92	705,98
19	710,15	706,85	714,82
20	709,6	710,9	708,81
Rata rata	711,14	710,12	712,06
SD	3,10	2,94	3,51

Didapatkan rata rata bobot tablet = $711,11 \pm 3,19$

LS 2

No tablet	Bobot (mg)		
	Replikasi		
	1	2	3
1	340,32	340,56	350,2
2	345,9	339,9	345,9
3	350,05	338,87	350,05
4	340,56	348,87	346,31
5	339,9	340,8	341,2
6	338,87	339,31	337,26
7	342,87	329,2	346,87
8	343,89	347,26	343,89
9	346,31	345,8	336,31
10	349,2	348,2	349,78
11	347,26	342,9	337,26
12	345,8	337,75	345,8
13	348,2	342,9	342,2
14	342,9	341,25	342,9
15	349,75	340,32	342,75
16	342,9	345,9	342,9
17	342,25	350,05	342,25
18	345,8	345,8	341,25
19	347,09	340,09	344,32
20	343,9	343,9	335,9
Rata rata	344,68	342,48	343,26
SD	3,37	4,79	4,35

Didapatkan rata rata bobot tablet = $348,38 \pm 4,17$

LS 3

No tablet	Bobot (mg)		
	Replikasi		
	1	2	3
1	235,9	229,9	228,15
2	232,85	230,9	237,06
3	231,25	237,25	232,85
4	232,5	230,78	229,5
5	236,9	230,92	226,09
6	231,08	234,4	240,08
7	237,8	230,17	236,7
8	229,9	235,45	231,95
9	230,9	236,04	229,19
10	234,03	232,39	238,62
11	231,93	230,28	235,83
12	232,88	231,28	239,13
13	232,09	230,73	240,28
14	236,7	230,17	236,35
15	231,95	228,95	235,45
16	230,8	237,56	229,9
17	231,05	235,85	230,9
18	234,04	231,29	230,94
19	230,17	229,87	231,16
20	235,45	240,15	240,45
Rata rata	233,01	232,72	234,03
SD	2,39	3,23	4,48

Didapatkan rata rata bobot tablet = $233,25 \pm 3,37$

LS 4

No tablet	Bobot (mg)		
	Replikasi		
	1	2	3
1	175,9	173,4	170,38
2	172,08	172,03	175,18
3	170,18	173,84	175,29
4	173,08	170,37	168,97
5	170,27	172,93	171,03
6	170,85	174,85	169,67
7	171,02	169,85	173,5
8	171,95	170,28	170,52
9	170,85	169,75	169,03
10	173,4	172,8	170,38
11	172,03	172,45	175,9
12	177,09	171,03	172,08
13	175,55	169,82	176,19
14	174,81	173,68	174,05
15	171,72	170,29	173,14
16	174,03	168,97	168,37
17	170,38	170,85	175,15
18	175,18	171,49	170,91
19	172,93	170,95	169,85
20	174,85	169,02	176,28
Rata rata	172,91	171,43	172,29
SD	2,10	1,72	2,70
	1,22	1,00	1,57

Didapatkan rata rata bobot tablet = $172,21 \pm 2,18$

2. Hasil uji kekerasan tablet lisisolid atorvastatin-ca

Formula	Kekerasan (kg)					Rata-rata ±SD (Kg)
	Replikasi					
	1	2	3	4	5	
LS 1	6,5	6,4	6,35	6,6	6,75	6,52±0,16
LS 2	5,5	5,2	5,7	5,4	6,05	5,57±0,32
LS 3	5,05	5,4	5,28	5,5	4,9	5,23±0,25
LS 4	4,5	4,2	4,4	4,15	4,25	4,30±0,15

3. Hasil uji kerapuhan tablet lisisolid atorvastatin-ca

Formula	Bobot yang hilang (%)			Rata-rata ±SD (%)
	Replikasi			
	1	2	3	
LS 1	0,18	0,17	0,19	0,18±0,01
LS 2	0,25	0,3	0,26	0,27±0,03
LS 3	0,38	0,4	0,35	0,38±0,02
LS 4	0,55	0,68	0,7	0,64±0,08

4. Hasil uji waktu hancur tablet lisisolid atorvastatin-ca

Formula	(menit)			Rata-rata ±SD (menit)
	Replikasi			
	1	2	3	
LS 1	2,05	2,54	2,18	2,26±0,25
LS 2	2,05	1,5	2,31	1,95±0,41
LS 3	1,4	1,55	1,3	1,42±0,13
LS 4	1,05	1,2	1	1,08±0,10

Lampiran 6. Hasil uji penetapan kadar tablet liquisolid atorvastatin-ca

Persamaan regresi linier $y = 0,05438x - 0,08525$

$R = 0,99909$.

Formula	Abs	Kadar (mcg/ml)	Pengenceran	Kadar (mg/ml)	Rata rata kadar \pm SD	CV (%)
LS 1	0,453	9,90	10x	9,90	10,39 \pm 0,46	4,40
	0,502	10,80	10x	10,80		
	0,485	10,49	10x	10,49		
LS 2	0,47	10,21	10x	10,21	10,39 \pm 0,19	1,86
	0,491	10,60	10x	10,60		
	0,479	10,38	10x	10,38		
LS 3	0,468	10,17	10x	10,17	10,36 \pm 0,30	2,87
	0,497	10,71	10x	10,71		
	0,47	10,21	10x	10,21		
LS 4	0,471	10,23	10x	10,23	10,44 \pm 0,34	3,26
	0,504	10,84	10x	10,84		
	0,473	10,27	10x	10,27		

Lampiran 7. Hasil uji perolehan kembali tablet liquisolid atorvastatin-ca

Formula	Kadar yang diperoleh (mg)	Kadar sesungguhnya (mg)	Perolehan kembali (%)	Rata rata (%)
LS 1	9,90	10	98,98	103,94
	10,80	10	107,99	
	10,49	10	104,86	
LS 2	10,21	10	102,11	103,94
	10,60	10	105,97	
	10,38	10	103,76	
LS 3	10,17	10	101,74	103,64
	10,71	10	107,07	
	10,21	10	102,11	
LS 4	10,23	10	102,29	104,43
	10,84	10	108,36	
	10,27	10	102,66	

Lampiran 8. Hasil uji disolusi tablet liquisolid Atorvastatin-ca

1. LS 1

Disolusi 1

menit	abs	kadar mcg/ml	kadar mg/ml	jumlah (mg)	faktor koreksi	jumlah terkoreksi	RASIO bobot tab	%disolusi
0	0	0	0	0	0	0	0,9922	0,00
5	0,220	5,6133	0,0056	5,0519	0,0000	5,0519	0,9922	48,24
15	0,304	7,1580	0,0072	6,4422	0,0281	6,4702	0,9922	61,79
30	0,368	8,3349	0,0083	7,5014	0,0358	7,5372	0,9922	71,97
45	0,447	9,7876	0,0098	8,8088	0,0417	8,8505	0,9922	84,512
60	0,503	10,8174	0,0108	9,7357	0,0489	9,7846	0,9922	93,44

Disolusi 2

menit	abs	kadar mcg/ml	kadar mg/ml	jumlah (mg)	faktor koreksi	jumlah terkoreksi	RASIO bobot tab	%disolusi
0	0	0	0	0	0	0	1,0018	0,0000
5	0,221	5,6317	0,0056	5,0685	0,0000	5,0685	1,0018	48,8683
15	0,305	7,1764	0,0072	6,4587	0,0282	6,4869	1,0018	62,5437
30	0,363	8,2429	0,0082	7,4186	0,0359	7,4545	1,0018	71,8733
45	0,398	8,8865	0,0089	7,9979	0,0412	8,0391	1,0018	77,5096
60	0,513	11,0013	0,0110	9,9012	0,0444	9,9456	1,0018	95,8912

Disolusi 3

menit	abs	kadar mcg/ml	kadar mg/ml	jumlah (mg)	faktor koreksi	jumlah terkoreksi	RASIO bobot tab	%disolusi
0	0	0	0	0	0	0	0,9963	0,0000
5	0,218	5,5765	0,0056	5,0188	0,0000	5,0188	0,9963	48,1248
15	0,355	8,0958	0,0081	7,2862	0,0279	7,3141	0,9963	70,1337
30	0,373	8,4268	0,0084	7,5841	0,0405	7,6246	0,9963	73,1110
45	0,483	10,4496	0,0104	9,4047	0,0421	9,4468	0,9963	90,5835
60	0,504	10,8358	0,0108	9,7522	0,0522	9,8045	0,9963	94,0132

2. LS 2

Disolusi 1

menit	abs	kadar mcg/ml	kadar mg/ml	jumlah (mg)	faktor koreksi	jumlah terkoreksi	RASIO bobot tab	%disolusi
0	0	0	0	0	0	0	0,9880	0,0000
5	0,152	4,3628	0,0044	3,9265	0,0000	3,9265	0,9880	37,3387
15	0,259	6,3305	0,0063	5,6974	0,0218	5,7192	0,9880	54,3859
30	0,269	6,5143	0,0065	5,8629	0,0317	5,8946	0,9880	56,0533
45	0,334	7,7096	0,0077	6,9387	0,0326	6,9712	0,9880	66,2918
60	0,394	8,8130	0,0088	7,9317	0,0385	7,9702	0,9880	75,7915

Disolusi 2

menit	abs	kadar mcg/ml	kadar mg/ml	jumlah (mg)	faktor koreksi	jumlah terkoreksi	RASIO bobot tab	%disolusi
0	0	0	0	0	0	0	0,9873	0,0000
5	0,109	3,5721	0,0036	3,2149	0,0000	3,2149	0,9873	30,5497
15	0,224	5,6868	0,0057	5,1182	0,0179	5,1360	0,9873	48,8055
30	0,299	7,0660	0,0071	6,3594	0,0284	6,3878	0,9873	60,7013
45	0,332	7,6729	0,0077	6,9056	0,0353	6,9409	0,9873	65,9567
60	0,378	8,5188	0,0085	7,6669	0,0384	7,7052	0,9873	73,2200

disolusi 3

menit	abs	kadar mcg/ml	kadar mg/ml	jumlah (mg)	faktor koreksi	jumlah terkoreksi	RASIO bobot tab	%disolusi
0	0	0	0	0	0	0	0,9785	0,0000
5	0,125	3,8663	0,0039	3,4797	0,0000	3,4797	0,9785	32,7716
15	0,183	4,9329	0,0049	4,4396	0,0193	4,4589	0,9785	41,9941
30	0,303	7,1396	0,0071	6,4256	0,0247	6,4503	0,9785	60,7487
45	0,385	8,6475	0,0086	7,7827	0,0357	7,8184	0,9785	73,6340
60	0,412	9,1440	0,0091	8,2296	0,0432	8,2728	0,9785	77,9135

3. LS 3

Disolusi 1

menit	abs	kadar mcg/ml	kadar mg/ml	jumlah (mg)	faktor koreksi	jumlah terkoreksi	RASIO bobot tab	%disolusi
0	0	0	0	0	0	0	0,9905	0,0000
5	0,153	4,3812	0,0044	3,9431	0,0000	3,9431	0,9905	37,6998
15	0,178	4,8409	0,0048	4,3568	0,0219	4,3787	0,9905	41,8652
30	0,238	5,9443	0,0059	5,3499	0,0242	5,3741	0,9905	51,3814
45	0,276	6,6431	0,0066	5,9788	0,0297	6,0085	0,9905	57,4471
60	0,400	8,9233	0,0089	8,0310	0,0332	8,0642	0,9905	77,1018

Disolusi 2

menit	abs	kadar mcg/ml	kadar mg/ml	jumlah (mg)	faktor koreksi	jumlah terkoreksi	RASIO bobot tab	%disolusi
0	0	0	0	0	0	0	1,0134	0,0000
5	0,156	4,4364	0,0044	3,9927	0,0000	3,9927	1,0134	39,0583
15	0,180	4,8777	0,0049	4,3899	0,0222	4,4121	1,0134	43,1609
30	0,243	6,0362	0,0060	5,4326	0,0244	5,4570	1,0134	53,3821
45	0,279	6,6982	0,0067	6,0284	0,0302	6,0586	1,0134	59,2672
60	0,325	7,5441	0,0075	6,7897	0,0335	6,8232	1,0134	66,7469

Disolusi 3

menit	abs	kadar mcg/ml	kadar mg/ml	jumlah (mg)	faktor koreksi	jumlah terkoreksi	RASIO bobot tab	%disolusi
0	0	0	0	0	0	0	1,0099	0,0000
5	0,137	4,0870	0,0041	3,6783	0,0000	3,6783	1,0099	35,8566
15	0,180	4,8777	0,0049	4,3899	0,0204	4,4104	1,0099	42,9932
30	0,249	6,1466	0,0061	5,5319	0,0244	5,5563	1,0099	54,1638
45	0,260	6,3488	0,0063	5,7140	0,0307	5,7447	1,0099	56,0004
60	0,355	8,0958	0,0081	7,2862	0,0317	7,3180	1,0099	71,3370

4. LS 4

Disolusi 1

menit	abs	kadar mcg/ml	kadar mg/ml	jumlah (mg)	faktor koreksi	jumlah terkoreksi	RASIO bobot tab	%disolusi
0	0	0	0	0	0	0	0,9842	0,0000
5	0,131	3,9766	0,0040	3,5790	0,0000	3,5790	0,9842	33,7402
15	0,228	5,7604	0,0058	5,1844	0,0199	5,2042	0,9842	49,0619
30	0,231	5,8156	0,0058	5,2340	0,0288	5,2628	0,9842	49,6141
45	0,253	6,2201	0,0062	5,5981	0,0291	5,6272	0,9842	53,0492
60	0,303	7,1396	0,0071	6,4256	0,0311	6,4567	0,9842	60,8695

Disolusi 2

menit	abs	kadar mcg/ml	kadar mg/ml	jumlah (mg)	faktor koreksi	jumlah terkoreksi	RASIO bobot tab	%disolusi
0	0	0	0	0	0	0	0,9823	0,0000
5	0,136	4,0686	0,0041	3,6617	0,0000	3,6617	0,9823	34,4534
15	0,210	5,4294	0,0054	4,8864	0,0203	4,9068	0,9823	46,1681
30	0,222	5,6501	0,0057	5,0850	0,0271	5,1122	0,9823	48,1008
45	0,234	5,8707	0,0059	5,2837	0,0283	5,3119	0,9823	49,9799
60	0,299	7,0660	0,0071	6,3594	0,0294	6,3888	0,9823	60,1121

Disolusi 3

menit	abs	kadar mcg/ml	kadar mg/ml	jumlah (mg)	faktor koreksi	jumlah terkoreksi	RASIO bobot tab	%disolusi
0	0	0	0	0	0	0	0,9813	0,0000
5	0,141	4,1605	0,0042	3,7445	0,0000	3,7445	0,9813	35,1946
15	0,173	4,7490	0,0047	4,2741	0,0208	4,2949	0,9813	40,3680
30	0,213	5,4846	0,0055	4,9361	0,0237	4,9598	0,9813	46,6179
45	0,233	5,8523	0,0059	5,2671	0,0274	5,2945	0,9813	49,7636
60	0,298	7,0476	0,0070	6,3429	0,0293	6,3721	0,9813	59,8920

Lampiran 9. Hasil perhitungan DE_{60} uji disolusi tablet lisisolid atorvastatin-ca

1. LS 1

Replikasi	Luas Bidang	Luas Area Bidang (A+B)	DE_{60} (%)
1	4182,44	6000	69,7073
2	4108,27	6000	68,4706
3	4398,124	6000	73,3021
Rata-Rata			70,4933
SD			2,509801

2. LS 2

Replikasi	Luas Bidang	Luas Area Bidang (A+B)	DE_{60} (%)
1	3363,476	6000	56,05793
2	3288,213	6000	54,80355
3	3370,805	6000	56,18009
Rata-Rata			55,68052
SD			0,761934

3. LS 3

Replikasi	Luas Bidang	Luas Area Bidang (A+B)	DE_{60} (%)
1	3016,754	6000	50,27923
2	945,1057	6000	50,3798
3	728,678	6000	49,8972
Rata-Rata			50,18541
SD			0,254629

4. LS 4

Replikasi	Luas Bidang	Luas Area Bidang (A+B)	DE_{60} (%)
1	2862,796	6000	47,71327
2	2757,553	6000	45,95922
3	822,4167	6000	44,3912
Rata-Rata			46,0212
SD			1,661917

Lampiran 10. Hasil Uji Statistik DE₆₀

1. Uji Normalitas Data

Tests of Normality

Formula	Kolmogorov-Smirnov ^a			Shapiro-Wilk		
	Statistic	df	Sig.	Statistic	df	Sig.
DE 60 LS 1	.289	3	.	.927	3	.477
LS 2	.343	3	.	.843	3	.223
LS 3	.336	3	.	.856	3	.256
LS 4	.330	3	.	.866	3	.284
tablet ATV HEXA	.268	3	.	.951	3	.572

a. Lilliefors Significance Correction

2. Uji Homogenitas Data

Oneway

[DataSet0]

Test of Homogeneity of Variances

DE 60			
Levene Statistic	df1	df2	Sig.
2.335	4	10	.126

3. Uji One Way Anova

ANOVA

DE 60

	Sum of Squares	df	Mean Square	F	Sig.
Between Groups	1320.241	4	330.060	154.814	.000
Within Groups	21.320	10	2.132		
Total	1341.561	14			

4. Uji Post Hoc LSD

Post Hoc**Multiple Comparisons**DE 60
LSD

(i) Formula	(j) Formula	Mean Difference (I-J)	Std. Error	Sig.	95% Confidence Interval	
					Lower Bound	Upper Bound
LS 1	LS 2	8.15000'	2.33907	.006	2.9382	13.3618
	LS 3	19.31000'	2.33907	.000	14.0982	24.5218
	LS 4	25.14000'	2.33907	.000	19.9282	30.3518
	tablet ATV HEXA	8.39970'	2.33907	.005	3.1879	13.6115
LS 2	LS 1	-8.15000'	2.33907	.006	-13.3618	-2.9382
	LS 3	11.16000'	2.33907	.001	5.9482	16.3718
	LS 4	16.99000'	2.33907	.000	11.7782	22.2018
	tablet ATV HEXA	.24970	2.33907	.917	-4.9621	5.4615
LS 3	LS 1	-19.31000'	2.33907	.000	-24.5218	-14.0982
	LS 2	-11.16000'	2.33907	.001	-16.3718	-5.9482
	LS 4	5.83000'	2.33907	.032	.6182	11.0418
	tablet ATV HEXA	-10.91030'	2.33907	.001	-16.1221	-5.6985
LS 4	LS 1	-25.14000'	2.33907	.000	-30.3518	-19.9282
	LS 2	-16.99000'	2.33907	.000	-22.2018	-11.7782
	LS 3	-5.83000'	2.33907	.032	-11.0418	-.6182
	tablet ATV HEXA	-16.74030'	2.33907	.000	-21.9521	-11.5285
tablet ATV HEXA	LS 1	-8.39970'	2.33907	.005	-13.6115	-3.1879
	LS 2	-.24970	2.33907	.917	-5.4615	4.9621
	LS 3	10.91030'	2.33907	.001	5.6985	16.1221
	LS 4	16.74030'	2.33907	.000	11.5285	21.9521

*. The mean difference is significant at the 0.05 level.

Perbandingan (a)	Perbandingan (b)	Sig.	Keterangan
LS 1	LS 2	0,006	Berbeda bermakna
	LS 3	0,000	Berbeda bermakna
	LS 4	0,000	Berbeda bermakna
	Tablet Atorvastatin-Ca di pasaran	0,005	Berbeda bermakna
LS 2	LS 1	0,006	Berbeda bermakna
	LS 3	0,001	Berbeda bermakna
	LS 4	0,000	Berbeda bermakna
	Tablet Atorvastatin-Ca di pasaran	0,917	Tidak berbeda
LS 3	LS 1	0,000	Berbeda bermakna
	LS 2	0,000	Berbeda bermakna
	LS 4	0,032	Berbeda bermakna
	Tablet Atorvastatin-Ca di pasaran	0,001	Berbeda bermakna
LS 4	LS 1	0,000	Berbeda bermakna
	LS 2	0,000	Berbeda bermakna
	LS 3	0,032	Berbeda bermakna
	Tablet Atorvastatin-Ca di pasaran	0,000	Berbeda bermakna
Tablet Atorvastatin-Ca di pasaran	LS 1	0,005	Berbeda bermakna
	LS 2	0,917	Tidak berbeda
	LS 3	0,001	Berbeda bermakna
	LS 4	0,000	Berbeda bermakna

